



# Patton Square Park

Upcoming Patton Square Park Community Design Workshop and questionnaire

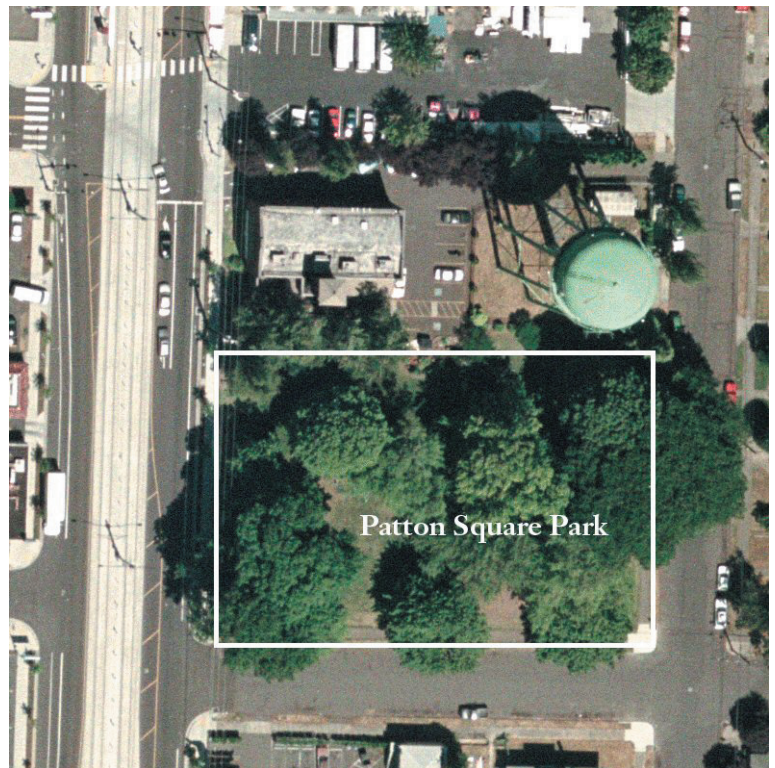
## Come Help Redesign Your Neighborhood Park!

Patton Square Park is not large or grand, but it offers Portlanders one of few green spaces along the new Interstate MAX light-rail line. The 1.26-acre park is nestled next to the Interstate Firehouse Cultural Center (IFCC), on Interstate Avenue and Emerson, just south of Killingsworth Avenue. Portland Parks & Recreation (PP&R) acquired the Park in 1960. Currently Patton's offerings are somewhat limited—consisting primarily of a small playground and a variety of large older trees. Now, however Interstate Corridor Urban Renewal Area (ICURA) funding is available through the Portland Development Commission (PDC) to redesign and improve the park. And we'd love to have your input!

In 2003, a citizen committee, Parks and PDC completed a Needs Assessment of all 12 parks in the Interstate urban renewal area. A new design for Patton Square was identified as one of the priorities. Inside this newsletter, you'll find a registration form for the June 25th Patton Square Community Design Workshop and a park use questionnaire. We hope you can attend or if not, can send us your thoughts via mail or the Web.

For information about Interstate Corridor Urban Renewal

Area revitalization efforts and general questions about PDC activities in the Interstate Corridor, go to [www.pdc.us](http://www.pdc.us) or contact Carol Herzberg (503) 823-3276.



*Patton Square Park has a lovely forested space right next to the new Interstate Max line and the Interstate Firehouse Cultural Center.*

## Stay in Touch!

On the web, you can complete the questionnaire, register for the Design Workshop, and join the email list for Earl Boyles Park. All information about the park design and the construction schedule will be posted as the process moves forward.

Portland Parks & Recreation

1120 SW Fifth #1302

Portland, OR 97204

503-823-5588, 503-823-5570 (fax),

[pkplanning@ci.portland.or.us](mailto:pkplanning@ci.portland.or.us)

[www.portlandparks.org](http://www.portlandparks.org)

(click on "Planning & Development" and select "Patton Park" from the drop down menu.)

## Join the fun!

### Community Design Workshop

A community design workshop is scheduled for

**Saturday, June 25<sup>th</sup>**

**9AM-1PM at the**

**Interstate Firehouse Cultural Center  
5340 North Interstate Avenue**

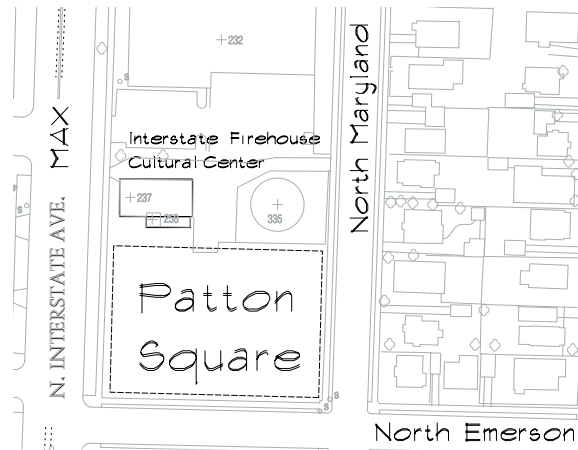
Working with maps, to-scale images of possible park features, colored pens and pencils, and their own imaginations, participants will work in teams to develop possible plans for the park. Each team will then present their ideas to the full group and together the group will identify common themes and decide on preferred approaches. By the end of the workshop, a plan for the park will emerge. With the Park itself right next door, participants will get a chance to walk around and visualize things before making their suggestions.

### Pre-Registration is Strongly Encouraged

Participants will receive a packet of background materials in the mail about a week before the

Workshop. This will include an explanation of the process, agenda, site map, description of site conditions and issues, and an overview of the design problem.

We are asking people to pre-register so we can mail your packet ahead of time. This will give you time to review the materials and prepare for the meeting. Also, Parks & Recreation staff will be better prepared with adequate materials and room for everyone.



*Patton Square Park is bounded by the new Interstate Max line to the east, the Interstate Firehouse Cultural Center, to the north, and North Emerson to south.*

## Patton Square Park

### Community Design Workshop Registration Form

(You can also register directly on the web. See address in the box to the left.)

Name: \_\_\_\_\_

Telephone (day): \_\_\_\_\_

Address: \_\_\_\_\_

(evening): \_\_\_\_\_

City: \_\_\_\_\_ Zipcode: \_\_\_\_\_

Email: \_\_\_\_\_

- Everyone with an interest in Patton Park is welcome to participate in the Community Design Workshop.
- It is important that participants commit to staying the entire 4 hours.
- Due to its length, this workshop is not appropriate for very young children.

Please let us know here if you have a particular interest, point of view, or expertise to contribute: (ex: are you an immediate neighbor, in-home child care provider, horticulturist, etc?)

Thank you! You will receive a confirmation and background materials prior to the workshop.

**Workshop is FREE. Pre-registration is STRONGLY RECOMMENDED.**

**Registration Deadline: Thursday, June 16<sup>th</sup>**

# Patton Square Park Questionnaire

Please help us understand how you currently use, or wish to use, Patton Square Park. This will help guide the discussion at the coming Workshop.

1. How important is it for you to have a green space/park nearby?
  - very important     not so important     no strong opinion
  
2. How often do you use city parks?
  - daily     more than once/week     more than once/month     less than once/month
  
3. Which parks or schools do you use the most?
  - Patton     Overlook     Madrona     Beach School     Other: \_\_\_\_\_
  
4. What do you enjoy the most at the park you use the most? (select all that apply)
  - Sitting/viewing/relaxing                       Nature watching or quiet reflection
  - Organized sports or activities                 Special Events
  - Walking     Children's play area
  - Meeting people                                     Exercise
  - Walking the dog
  - Other: \_\_\_\_\_
  
5. In your opinion, how important is it for a park to serve as a community gathering place?
  - very important     not so important     no strong opinion
  
6. In your opinion, what is missing from parks in your neighborhood? (check as many as apply)
  - benches     meeting/gathering place
  - shelter from the weather                         places for quiet contemplation
  - drinking fountain                                  picnic space
  - playgrounds                                         paths
  - other: \_\_\_\_\_ (please describe)
  
7. Which of the above are especially needed in Patton Square Park?

8. How would you prefer to get to the park?
  - walk
  - bicycle
  - public transportation – bus or light rail
  - car

9. Any other comments or thoughts you'd like to share:

\_\_\_\_\_

\_\_\_\_\_

\_\_\_\_\_

\_\_\_\_\_

\_\_\_\_\_

\_\_\_\_\_

\_\_\_\_\_

If you did not sign up for the Community Design Workshop but would like to continue to receive information about this project, please add your contact information here:

Name: \_\_\_\_\_

Address: \_\_\_\_\_

City/State: \_\_\_\_\_

Phone: \_\_\_\_\_

Email: \_\_\_\_\_

Add  
stamp  
here

Portland Parks & Recreation  
1120 SW Fifth #1302  
Portland, OR 97204

Attention: Patton Square Park Master Plan

\*\*\*\*\*ECSRWSS  
POSTAL CUSTOMER

**PORTLAND PARKS & RECREATION**  
Healthy Parks, Healthy Portland  
1120 SW Fifth Room 1302, Portland, OR 97219  
[www.PortlandParks.org](http://www.PortlandParks.org)



PRSRP STD  
US POSTAGE  
PAID  
PORTLAND, OR  
PERMIT NO. 653