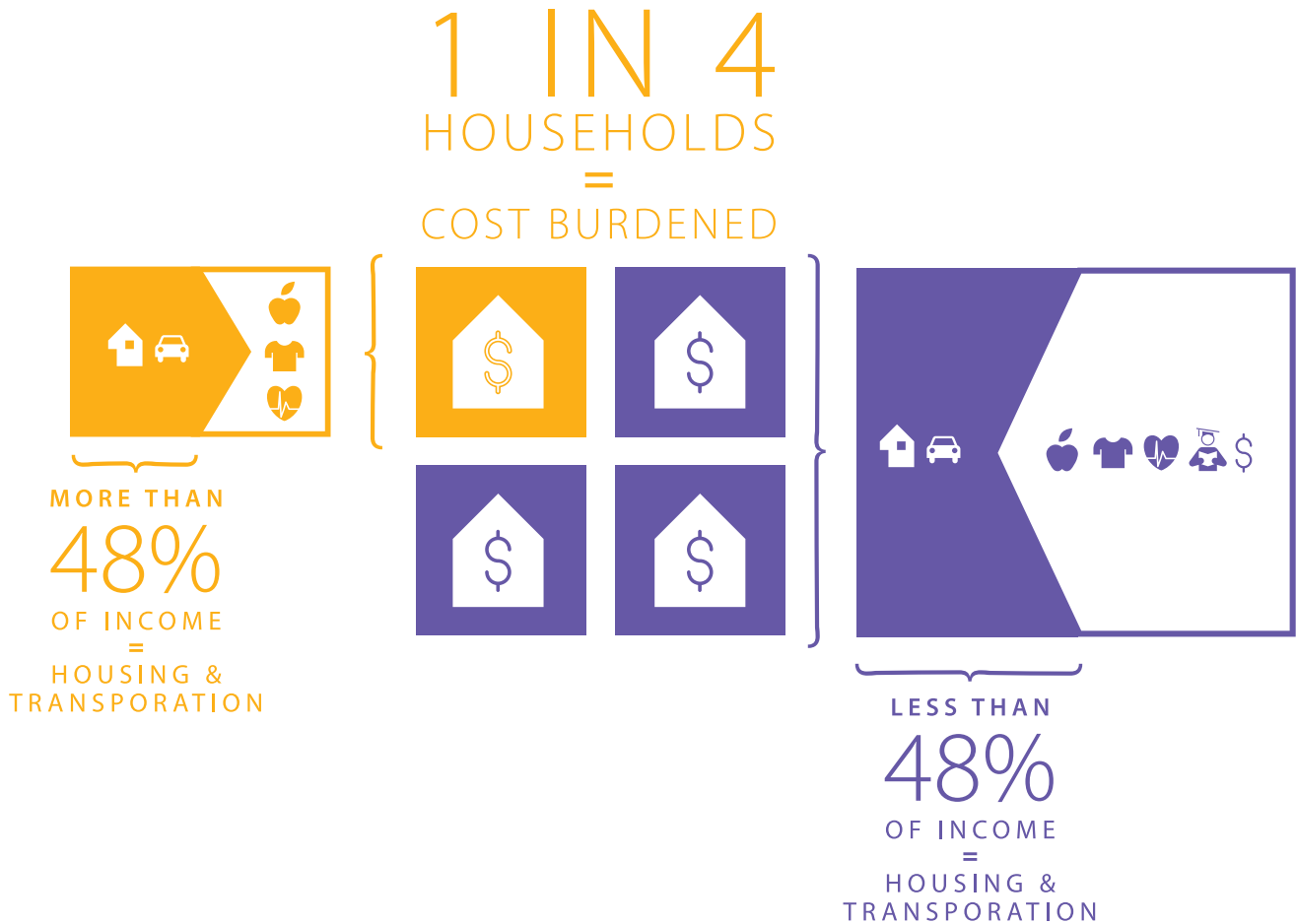


COST BURDENED HOUSEHOLDS



MANY PORTLANDERS STRUGGLE TO MAKE ENDS MEET. THE WORKING POOR MADE UP 23 PERCENT OF MULTNOMAH COUNTY HOUSEHOLDS IN 2005–07 (BEFORE THE RECENT RECESSION) AND WERE NOT ABLE TO COVER LOCAL COSTS FOR BASIC NEEDS.