

---

# Report for 1910

(Extract from Message of Mayor Joseph Simon, January 4, 1911.)

## PARK DEPARTMENT

The activity displayed and the progress made in the development of our park system is a matter of congratulation. The principal effort has been directed toward establishing playgrounds for children. Five areas have been graded and equipped with the most approved playground apparatus—at City Park, North Parkway, Sellwood, Peninsula and Columbia Parks. During the school vacation period a supervisor and instructors directed the activities on these grounds. In point of attendance, that at Peninsula Park outranked all others, averaging 3,015 per week.

As part of the playground function, a modern reinforced concrete swimming pool was opened at Sellwood Park, and besides the instructor and attendants to care for the public, a bathing suit and towel were issued free of all charge. It was distinctly noticeable that drownings in the river were materially checked as soon as this bathing facility was put in operation.

Construction work has been started in the development of Sellwood, Peninsula and Columbia Parks; beside grading operations, drainage and water systems have been partly installed and some plantations have been made. In the Ladd Addition several small areas have been graded, water installed and plantations made.

During the year a number of parcels of land have been acquired to round out the original takings determined upon. A donation of an acre and a half located in the northeast section was made by Mrs. Laura Gammans and Dr. T. L. Elliot; an exchange of small parcels was made with the Fulton Park Land Company to secure a more satisfactory boundary to Fulton Park.

During the ensuing year it is contemplated to construct the Terwilliger Parkway, in South Portland, a park drive in the northwest section of the city, a playground and a swimming pool in South Portland, and a playground in Brooklyn and in Kenilworth; also to start construction work at Mt. Tabor and Ladd Parks, and further that which has been started at City Park, Sellwood, Peninsula and Columbia Parks.

A definite policy has been adopted in the procedure of park development, whereby a preliminary plan is prepared indicating the general arrangement of the park, the features it provides and the means of solving the difficulties encountered in its perpetual working out.

---

## REPORTS OF THE PARK BOARD

To Honorable Park Board.

Gentlemen: I beg to submit the following annual report:

The past year has been notable for the initiation of development work in several of the Parks.

The routine maintenance calls for no special mention. A detailed report is made on the separate properties.

### FORESTRY BUILDING

This property is two acres in extent and very poorly related to the neighboring streets and properties. It is desirable to bound the property by streets on all sides and to have the streets parallel with the axis of the building. It is very desirable to preserve the group of trees on the west side of the building and to acquire sufficient land on the east, north and south sides to permit the planting of some trees in order to place the building in a better setting and to screen out the medley of surrounding structures which are certain to be erected on contiguous property and very probably of a design so contrasting to the rusticity of the Forestry Building as to materially detract from it. Moreover, the building is now partly in a public highway, and approach to it is over public highways not hard surfaced, with the consequence that the approach is often uninviting.

### MACLEAY PARK

During the year the trail following the brook was widened and constructed on easier grades. In the process numerous logs, some partially burned, were removed from the brook bed and the waters permitted to course along the old natural bed as it existed before the sluicing above the park had been undertaken and caused the deposit of sand and gravel beds several feet in depth.

Considerable protest was made about the work, on the theory that it artificialized the park; removed some of its natural elements, such as logs; abandoned the pools formed by fallen logs; opened the way to wheeled traffic and invited its consequent and certain injury. Some of these charges are based on supposition, some are partially true, others are false, and one is true yet inevitable if the park is to be made conveniently usable with the least possible ultimate destruction.

The amount of work accomplished has been comparatively trivial, yet the objections raised are of such extreme moment in the development and safeguarding of park scenery and value, that a brief explanation is well worth while.

It is proposed in the ultimate development of Macleay Park that a park drive be constructed south of Cornell Road to connect at the east end with Macleay Boulevard, and at its west end meet Cornell Road, thence by a detour at the base of the steep hillsides cross the County Road and ascend on the north side of the gulch to connect

---

## REPORTS OF THE PARK BOARD

with the crest line parkway proposed on the hills northwest of the park. To be sufficiently spacious and convenient to accommodate the use to which it is to be put requires an adequate width on lines free from sharp turns. In a region where soil is readily subject to avalanches, where the existing slope is almost maximum at which soil will come to rest and to provide a drive traversing a tract where fine old and large trees exist, means that it is mere prudence to span minor traversed gulches to protect the trees and prevent slipping of the ground. To argue for a narrow drive or object to necessary retaining constructions or protecting devices, signifies that the work must be temporary, partially completed or poorly done, and at best is but begging the question by compromise. It is better to frankly meet the issue and solve the problem in a thoroughgoing manner that insures a successful outcome and to provide all possible safeguards to minimize the injury and to provide all possible protection and thereafter to recloth the cut surfaces by plantations.

In addition to the aforementioned driveway, the only other construction necessary is the brookside walk following in general the course of the water and branching at a few points to connect on grade or by rustic log steps with the walk following in general the drive. At the west end the walk will mount by steps to the drive level and at its east end it should continue down the gulch, follow the first draw on the south and ascend to the Cornell Road, and thence to City Park.

It would be serious and wanton destruction to construct a drive in the bottom of the gulch. To do so would be bad design. The gulch is unsuited for adaptation to such use since the drive would necessitate a continuous retaining wall on both sides, forcing a construction on the brook, and altogether destroy trees by the wholesale, introduce light and draughts where shade and stillness are appropriate and exist, beside changing and requiring change in the entire valley vegetation. Convenience is necessary if a tract is to be made pleasingly accessible; only the youthful and vigorous can enjoy beautiful scenes if unusual energy and heroic efforts are necessary to reach them. It destroys or injures the restfulness, enjoyment and salutary effect of beautiful landscape if the mind is engaged on picking a route dangerous to life or limb, when it should be occupied by the contemplation of the beauty and poetry of the composition.

It is not to be gainsaid that any artificial operation is an injury, rather it is a necessary evil to be controlled, subdued, minimized and treated sympathetically with the other elements concerned.

Aside from lessening its usefulness and restricting its conveniences and pleasures, to leave the gulch untouched would ultimately cause a promiscuous rambling up and down the steep slopes, with the result and effect of so scarring and mutilating the banks as to seriously

---

## REPORTS OF THE PARK BOARD

affect the beauty of the park. To omit necessary constructions for convenience would be pleasing at the outset, but the ultimate harm would be far greater than were proper development methods adopted and necessary restrictions put into force. The safeguard against improper development is not to omit all development, but rather it is found in adapting the constructions to the problem involved, doing it frankly and consistently with the controlling motive of subordinating its appearance to the surrounding landscape and making them of a subdued and quiet type. In other words, if a bridge is necessary, the plan should be not to follow the contours slavishly to the extent of introducing sharp and dangerous curves, excessively narrowing the width of the drive, nor introducing whimsical details in its construction, but rather to provide a substantial structure without any special attempt to make it unduly conspicuous or ornate to the extent of attracting attention by contrast with its rural surroundings. A good illustration of the outcome of a policy adopted is that which happened at City Park before an underplanting was started. All shrub growth and ground cover was religiously kept down or out and an attempt made to rear lawns on the steep slopes and under the trees, and with it a uniform removal of all lower branches of the trees ensued.

Without a comprehensive, definite, general plan agreed upon and slavishly adhered to, the veritable artificializing of this park is very apt to occur. To forestall that, an accurate plan, supplemented by a clear, definite description of results aimed at, methods to be used in accomplishing them should be prepared and filed for future reference of varying administrations. Certainly no plan or description would be satisfactory if it failed to confine itself to approved practical methods of aesthetic forestry.

### CITY PARK

A playground was installed during the year, an iron animal cage erected, and the gradual transformation of plantation to a more consistent rural type continued. One application of heavy asphaltum base oil was applied to the drive in June, and was an effective dust-layer and roadway conservator.

Many residents make periodic protests against the continued maintenance of the zoo because of the noises by such animals as coyotes and lions. Their objections are well taken, yet to transfer the collection to any other of our present properties would be to increase the merit of the objections, since the present objectors bought their lands since the zoo was established, whereas residents in the vicinity of other park properties did not anticipate such use of the parks, and to inflict upon them a nuisance would but aggravate the situation.

It will be expensive to erect suitable and attractive quarters for the animals wherever they are moved, and such expense would not

---

## REPORTS OF THE PARK BOARD

be justifiable unless the convenience and health of the animals is at the same time provided. To properly house and corral the various species will require not less than three hundred acres. If the removal of the zoo is to be seriously considered at this time, I recommend that the above area of flat land with some natural existing water facilities be provided. Incidentally it should be mentioned that the best site would be on the slough bordering the Columbia River, where future extensions may be made to ultimately comprise a total of two thousand acres. Such a park is essential to a proper system if any attempt is made to include the essential features of the local landscape scenery and provide for the various forms of exertive exercise.

A new stable and administration yard is urgently needed, as is also the improvement of the new extension. The congestion in the present park is becoming ever more apparent, and should be relieved. The volume of visitors is at times so great as to make it virtually impossible to enforce restrictions, with the consequence that plantations are overrun, tramped out and destroyed. I earnestly recommend the fitting of a new track for use of the public, also the installation of a modern lighting system for at least one of the drive entrances to the overlook.

### GOVERNOR'S PARK

Governor's Park is given the minimum amount of attention in its undeveloped state. No material change therein is advisable until it is definitely and finally concluded whether there is to be an extension.

North Parkway has had a boys' and girls' outdoor gymnasium of its area.

### NORTH PARKWAY

North Parkway has had a boys' and girls' outdoor gymnasium equipment erected on it, thus utilizing three blocks for play.

A new fence around the boys' grounds will be necessary during the ensuing year, also some addition to the play apparatus, such as hammock swings, and in addition a shelter should be erected for the girls, all of which I recommend.

### SOUTH PARKWAY

South Parkway has been maintained in the general style of the year previous.

### LOWNSDALE AND CHAPMAN SQUARES

Lownsdale and Chapman Squares are cared for without particular change. The comfort stations are entirely inadequate, and their conveniences should be much extended, desirably by the erection of a subterranean station.

The walks are lined with benches on either side, allowing an insufficient passage room between, very frequently during the season, and

---

## REPORTS OF THE PARK BOARD

often at different periods of the day, consequently their widening should take place, all of which I recommend.

### SEVENTH STREET PLAYGROUND

This tract is in status quo since a year ago, awaiting developments in connection with South Portland playground.

### TERWILLIGER PARK

The slope on the west side of Kelly street has been graded and planted so far as the existing material would permit. From neighboring streets it is expected sufficient soil can be secured to fill the gulch in the northern portion and thus connect the two entrances by a grade walk. Unless Terwilliger Parkway is constructed this year, I recommend that this park be further improved.

### FULTON PARK

Fulton Park has only received watch care, and further attention is not urgent until Terwilliger Parkway is constructed, but on completion of the latter it should be put into finished shape with dispatch, for the reason that it will be the vantage point of many visitors using the parkway.

### SELLWOOD PARK

A playground consisting of separate divisions for boys, girls and children has been constructed in the southeast corner of the park. Drains, water system, fencing and plantations in connection therewith have been put in place.

A concrete swimming pool with nearby dressing lockers, shelter, shower bath and toilet accommodations have been constructed. The lockers and shelters are of temporary construction, an architect having been commissioned to prepare plans for a fireproof assembly building with refreshment, reading, toilet, locker and auditorium facilities.

I earnestly recommend that the five acres of flat and slope land on the north and west sides of the property be secured. This is necessary to properly protect the view cityward, and be it remembered that this same view largely determined the selection of this site.

Further, that the drain and water systems be extended over the entire park; a drive and walk constructed on the brow of the slope, and the meadow and plantation be put into a finished state.

### SELLWOOD TRIANGLE

Sellwood Triangle is too small to merit the expenditure of any material amount of funds upon it for improvement.

When parkway extensions are undertaken, it is probable that it can be made to serve to good purpose, but meanwhile I recommend that no special improvements be undertaken upon it.

---

## REPORTS OF THE PARK BOARD

### BROOKLYN PLAYGROUND

Brooklyn Playground was unfortunately delayed in construction by the work incident to the building of the adjoining stable of the street department. By next season it will be in readiness for use, although its equipment will not include a boys' apparatus. The restricted area does not lend itself to the commodious installation of both.

These grounds will be one of the best to keep open evenings whenever the demand therefor becomes sufficient to warrant it. Evening use implies ample light, and for this the street light will furnish one-third or one-half of that necessary.

### KENILWORTH PARK

Kenilworth Park is in need of early attention. The water in the pond becomes foul, the fence is partly missing and the remainder is dilapidated.

During the season many old stumps were removed, the grass cut, dead limbs removed and accumulated debris cleaned away.

The City Engineering Department was preparing plans for bounding streets, and that now having been completed, some improvement in harmony with established street grades may proceed.

I recommend that walks be subgraded, and the remaining area be graded and a boundary fence constructed and a playground equipped this year.

### LADD CIRCLE

Ladd Circle has been graded and laid down to turf and planted to tender annuals during the summer. A water system was installed. In the fall hardy shrubbery replaced the annuals.

Cement walks are necessary to complete the construction work, but this may be indefinitely postponed without harm.

A better and more ornate lighting system is desirable, and would advisedly consist of one or two cluster lights on ornamental standards erected in each block on the line of the trees between the curb and the private property. This is a matter the abutting property owners should provide, and if the general improvement executed on the circle by the Board is appreciated to the extent of their being willing to do their lesser share, the neighborhood will see to it that the lights are forthcoming.

### MULBERRY, ORANGE, MAPLE AND CYPRESS SQUARES

All these have been graded and planted to roses. Each square is intersected by turf walks and a water system installed. The only other construction necessary to complete these is the providing of low ornamental cement seats, disposed on the margins of the interior turf square.

---

## REPORTS OF THE PARK BOARD

### LADD PARK

Ladd Park has been cleared of debris and the grass mown. Some improvement work is warranted there, but it is suggested that it be taken up by item, according to the funds available at late summer.

### MT. TABOR PARK

Except to remove dead logs and wood, obliterate numerous interior fences, protect or fill sink holes and such minor work, virtually nothing has been done. Suggestions have been made to clear out all the undergrowth, also to remove various trees to open views from vantage points, but until an improvement plan is adopted it is unwise to do so. It is to be borne in mind that the construction of drives will necessarily require the removal of some vegetation, and until a study has been sufficiently far advanced to determine how these lines may best be constructed and with the least damage, it is better by far not to remove anything. Furthermore, the removal of all undergrowth would shear the park of one of its handsomest features and tend to render the woods monotonous.

I recommend that the building on the summit be remodeled to fit it for refectory and rest conveniences, and as a music pavilion, also to subgrade an approach drive from West avenue to the summit.

### HOLLADAY PARK

Holladay Park has been maintained as heretofore. The neighboring populace had expected to have the park area extended, but since this seems improbable of fruition, the existing area could be improved.

A scheme featuring play has been proposed, but since the Irvington Club has made provision for a playground to be used by the neighborhood, hence Holladay Park should be developed as a local ornamental square, according to a scheme which saves virtually all the trees. Whenever the Board so desires, preparation therefor will be made.

### LINCOLN PARK

Lincoln Park has received only the customary attention. Its improvement is not pressingly required, and it seems that available funds could be used on other works to better advantage.

### PENINSULA PARK

Peninsula Park has had drainage and water systems installed in the northerly portion; grading was done, play apparatus erected, plantings made and two comfort stations constructed.

I recommend that the southerly end be graded and planted and water and drainage system extended over this area.

Opportunity exists in this park to provide swimming facilities, and if funds are available, I recommend that it be done.



---

## REPORTS OF THE PARK BOARD

### COLUMBIA PARK

Columbia Park has had walks subgraded and trees planted.

I recommend that drainage and water systems be installed, shrubbery planted, comfort facilities provided, and a boys' playground equipped during the year.

### GAMMANS SQUARE

Gammans Square I recommend be allowed to remain in its present state until more improvements are made in the neighborhood, and especially the streets graded.

### PATTON SQUARE, BELLE CREST TRIANGLE, MONT CLAIR TRIANGLE AND MYRTLE SQUARE (LENTS)

All these properties are either small or in undeveloped sections, and for similar reasons require no immediate improvement.

Herewith are presented statements of disbursements and playground statistics, and a report of Supervisor A. M. Grilley.

Concerning the detailed operation of the playgrounds, the report of Supervisor Grilley, submitted herewith, will explain.

Two features in the establishment of playgrounds call for special mention. One is the co-ordinating of the work of the Board with that of the School Board, and the other is the providing of community buildings for use during the entire year.

You are aware of the School Board laying pavements around some of the schools, providing walks and turf at others, and by various means attempting to supply the demand for exercise in play. It has appropriated \$20,000 for this work during the current year.

Were playgrounds established at each schoolhouse, the duplication and consequent economic loss to the community due to park playgrounds being also established for the same community would be obviated; it would provide grounds at points convenient of access to the ones who most need them; it would permit of larger grounds at less cost than the schools and separate playgrounds now represent, and it would obviate the need of constructing specialized and detailed buildings, for use to which the present school buildings could be put. One of the means of accomplishing this result would be an agreement between the two boards whereby on condition that the School Board provide an open tract of not less than two and preferably five acres for play purposes, contiguous to the school buildings, and enter into an agreement with the Park Board to grant the latter use of the specially fitted buildings serving play interests, the construction and maintenance of the grounds and play features will be assumed by the Park Board.

---

## REPORTS OF THE PARK BOARD

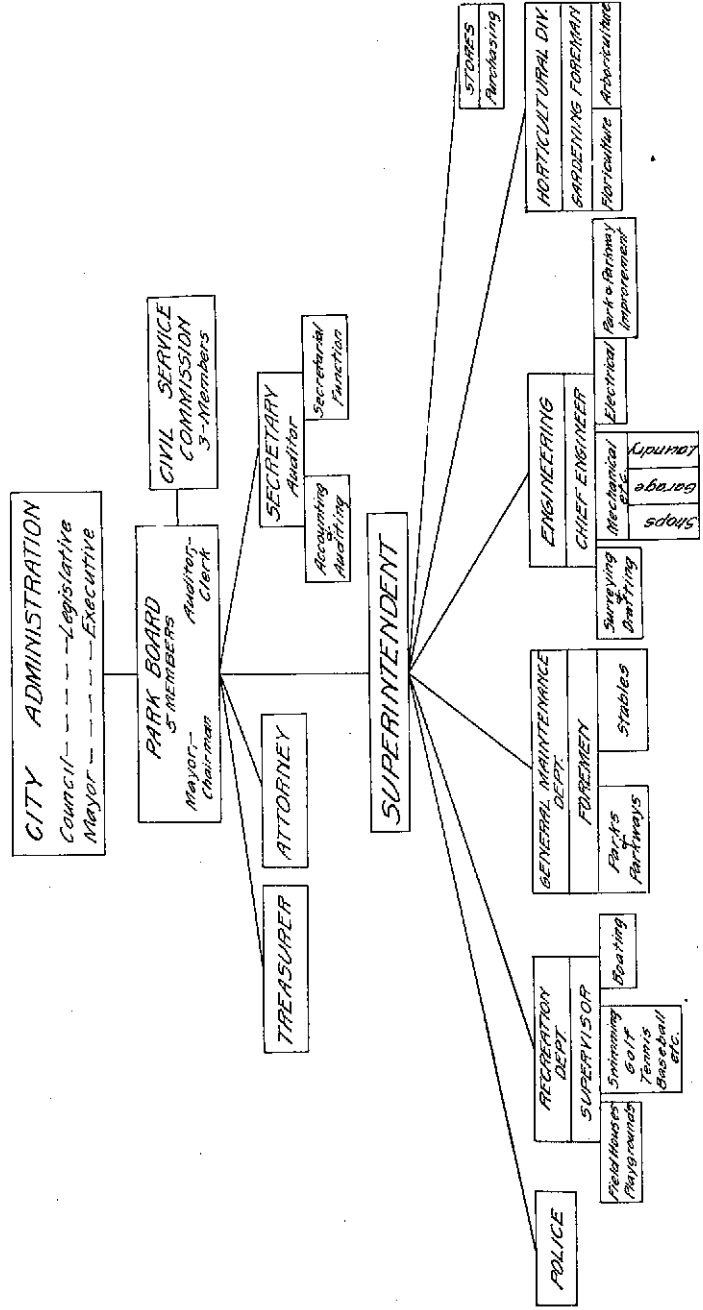
The other feature portends that if playgrounds are justifiable at all, there is need for them throughout the year. Playgrounds are not established only to provide opportunity for children to indulge in agreeable pastimes. They do that, to be sure, but the principal object is to afford recreation in pleasant form under proper supervision, with a view to guiding and instructing the youths in self-assertion and initiative in single and team work, with due regard to the rights of others. Excessive vitality and unwarranted diffidence contain the germ of much harm or of much good to the body politic, and upon the success of the municipality's care and intelligence in directing its growth depends the harm or benefit the community may ultimately expect to reap therefrom. It is idle to expect that this can be accomplished during the short summer vacation interval.

Both to render the proper services to the community and to permit of securing suitable persons to conduct it, there is need of establishing accommodations for conducting year-around centers.

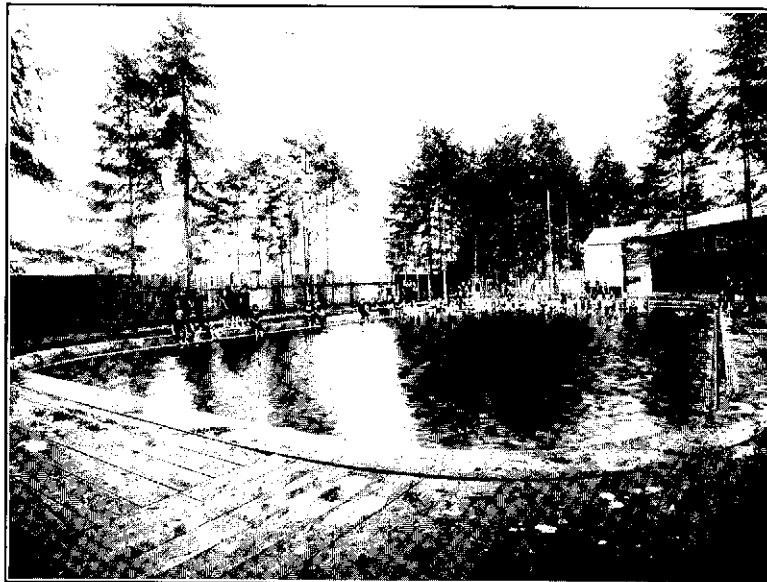
The operation of playgrounds is a comparatively new municipal activity; they supply a real and definite need, and in a general way one that is safe and even conservative for a civic corporation to control. Health, recreation and various sociological problems are involved. In the main, the direction playground development has taken, in its progress is conceded to be correct, but in consistently planning for a system of them implies the determination of many mooted points. Statistical data indicate that the major portion of the attendance comes from a radius of one-quarter to half a mile, pointing to the conclusion that they should be located between one-half and one mile apart. To distribute them with sufficient geographic frequency immediately points to the large number of tracts necessary. This has led some cities to make a vacation playground of each school ground and equipping them accordingly. Some cities are working on the basis of not providing each school section with a playground, but instead to have fewer playgrounds, have these of larger size—20 to 25 acres in extent, and make of them play parks, more completely equipped and more completely supervised. In either of these policies the financial and economic consideration are important, and warrant a most careful investigation before adoption. In any event, the park funds are in such a state, and the charter limitations as to future appropriations are such as to strongly argue against the Board undertaking to supply each school section with a playground unless the School Board provide the lands and assist in defraying the cost of supervision.

From the foregoing it will be observed that playground facilities and the municipality's obligations thereto are in a formative state, and until the costly experimental stage has further advanced, it would be well to proceed with caution.

E. T. MISCHE,  
Superintendent.



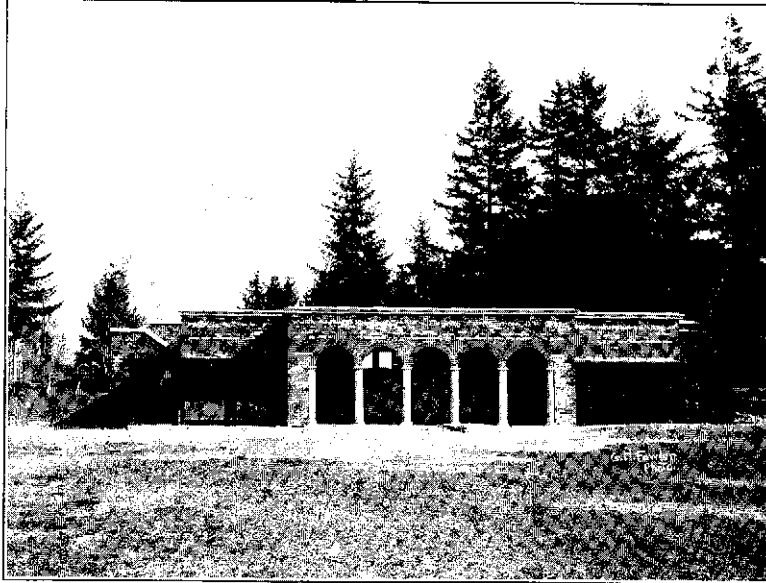
Administrative Organization of Portland Park Affairs



The Swimming Pool in Peninsula Park



Swimming Pool at Sellwood Park



Comfort Station at Kenilworth Park



Comfort Station at Columbia Park



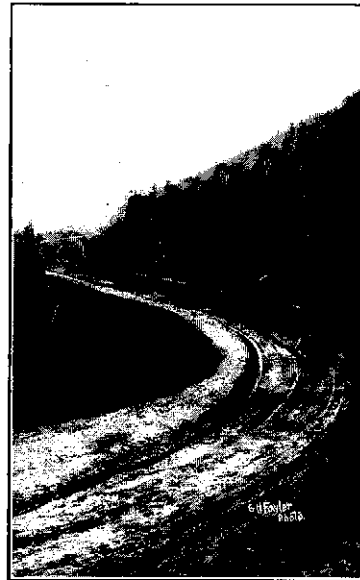
Comfort Station in Peninsula Park



Laurelhurst Park



The Ensign Fountain, 6th and Ankeny  
Presented by the National Humane  
Alliance, 1907  
Hermon Lee Ensign, Founder



A Section of Terwilliger Parkway  
Showing Curvature and Completed Grading



One of the Twenty Solid Brass  
Benson Fountains



In the Gulch at Macleay Park

---

## REPORTS OF THE PARK BOARD

(Extract from Treasurer's Report for 1910.)

### PARK FUND

Balance per report December 31, 1909.....	\$37,160.92
Received taxes, J. M. Lewis, County Treasurer.....	95,453.09
Received refund on warrant .....	2.50
Received guinea pigs sold .....	1.50
Received fines .....	9.50
Received S. H. Burnett, concession Holladay Park and City Park .....	750.00
Received donation Portland Railway, Light & Power Co.....	18.00
Received horse sold .....	46.00
Warrants paid and returned.....	\$117,060.97
Balance .....	16,380.54

\$133,441.51    \$133,441.51

Tax levy for 1910, .42 mills on assessed valuation of \$231,161,600.00.

### PARK AND BOULEVARD FUND

Balance as per report December 31, 1909.....	\$105,918.78
Received B. M. Lombard .....	5,000.00
Received refund Hayhurst .....	8,400.00
Warrants paid and returned.....	\$119,206.36
Warrants paid and returned.....	112.42

\$119,318.78    \$119,318.78



## Report for 1911

(Extract from Message of Mayor A. G. Rushlight, dated January 3, 1912.)

### PARK DEPARTMENT

In the development of the City's park system much progress has been made in the last year. Considerable preliminary work in the improvement and beautifying of newly acquired properties has been accomplished, the park area has been enlarged by the purchase of additional land, and negotiations have been opened for the taking over by the City of desirable small tracts for children's playgrounds.

Permanent plantations have been installed in the new park sites and two additional playgrounds have been equipped in the thickly settled residence centers. It was found necessary to construct another swimming tank in the Peninsula Park, one of the best patronized resorts owned by the people. Modern sanitary drainage systems have been installed in several of the parks and attractive features added here and there. Work is now under way in the grading and laying out