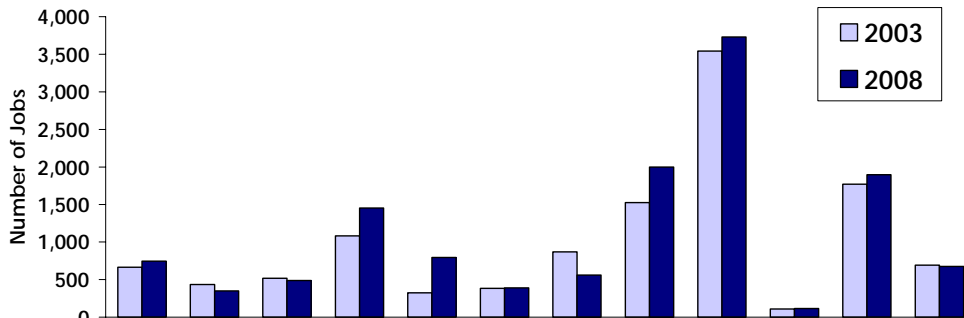


NW District Economic Indicators - #3 Summary

(June 24, 2010)

COVERED EMPLOYMENT (2003/08)



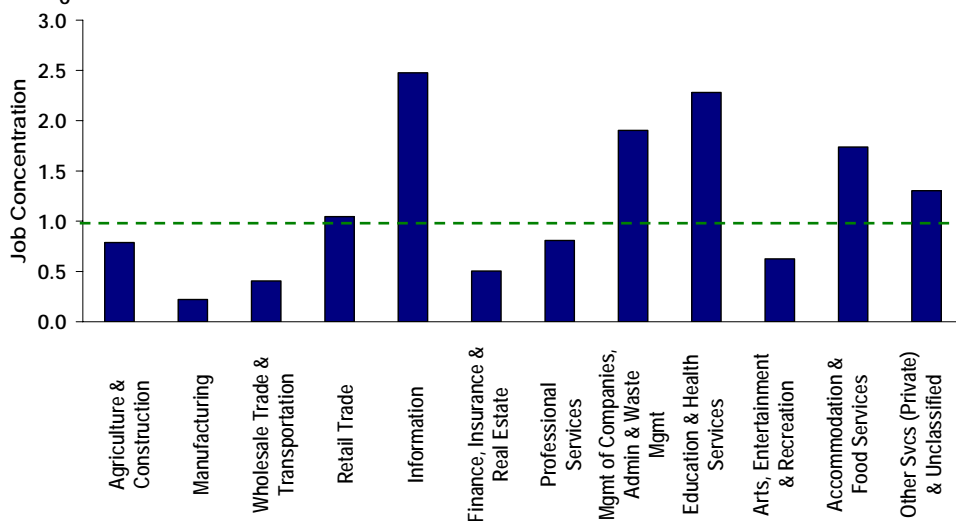
Total Jobs

13,202 (2008)

11,923 (2003)

+1,279 (03-08)

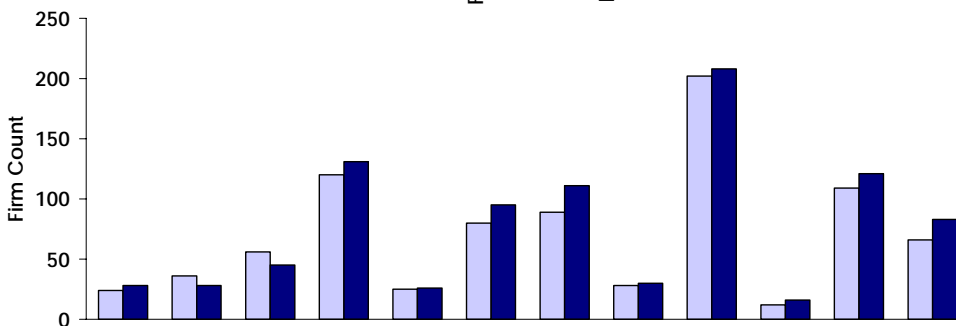
Note: No Public Administration jobs indicated in the NW District.



Job Concentration Compared to Portland Metro

>1.0 above avg

<1.0 below avg



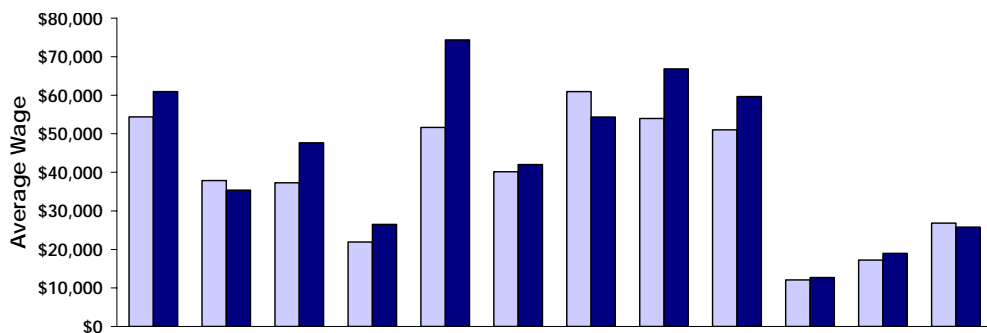
Total Firms

922 (2008)

847 (2003)

+75 (03-08)

Note: May include instances of a firm counted more than once. Excludes firms without employees covered by unemployment insurance.



Avg Wage

\$48,239 (2008)

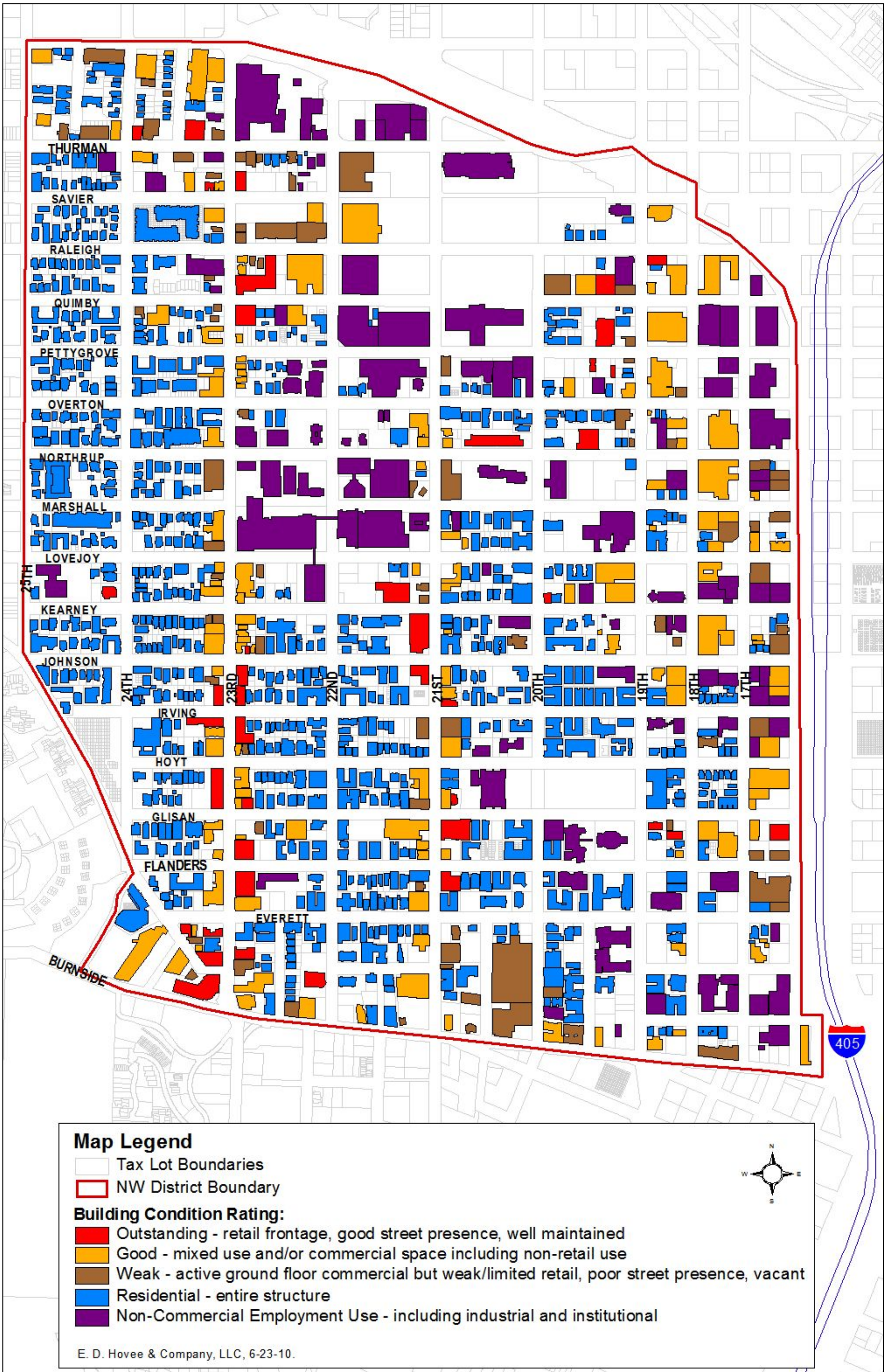
\$41,468 (2003)

+\$6,771 (03-08)

Source: OED.



NW DISTRICT COMMERCIAL PROPERTY CONDITIONS (PRELIMINARY)

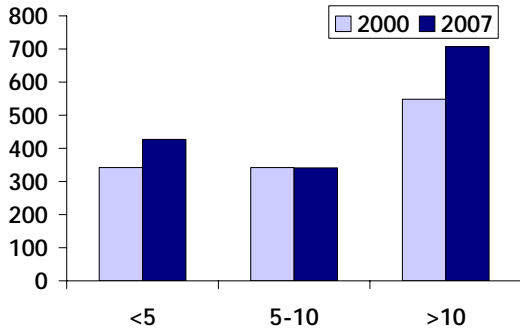


CITY OF PORTLAND BUSINESS LICENSE DATA (2000/07)

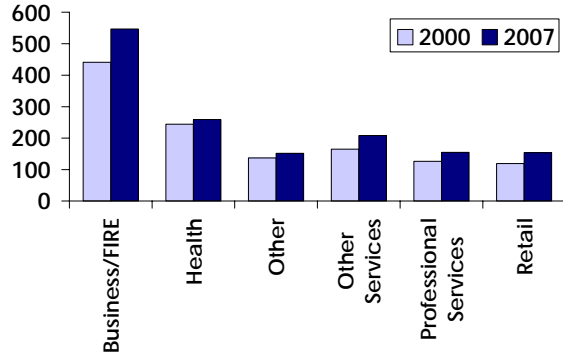
Number of Filed Returns (from the NW District)

By # of Years in Business

1,475 Total Returns (386 1/1 Accounts)



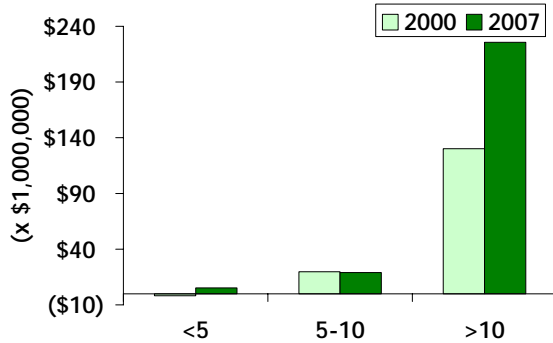
By Business Type



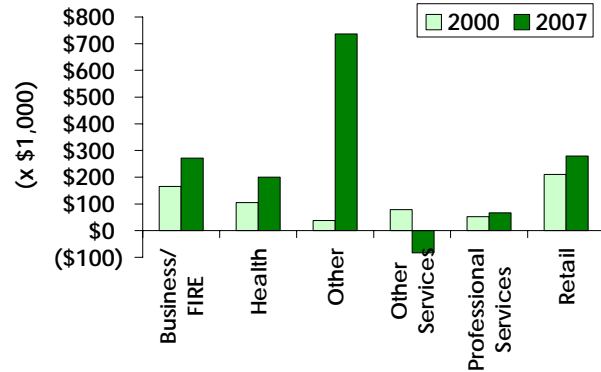
City Apportioned Net Income (NW District)

By # of Years in Business

\$229,593 Average All Firms

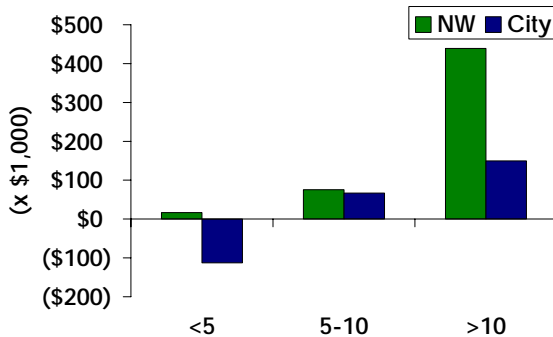


By Business Type

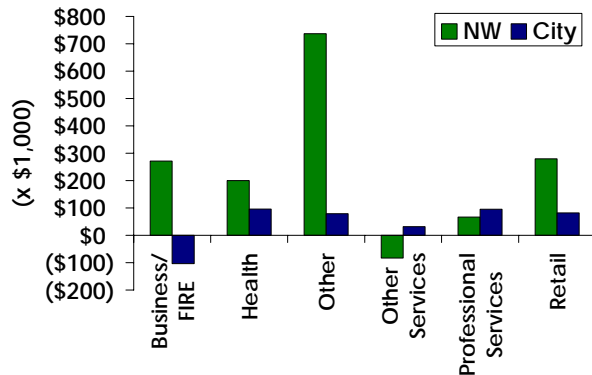


NW Compared to City Net Income per Firm (2007)

By # of Years in Business



By Business Type



E. D. Hovee & Company, LLC (EDH) has been providing economic and development consulting services for over 25 years – for private, non-profit, and public agency clients in and outside the Pacific Northwest. A particular strength of the firm is our multi-product approach to real estate – covering residential, office, live/work, lodging, cultural/entertainment venues, and parking as well as retail.