

Enrollment Change by School and School District

City of Portland

2001-02 to 2006-07



David Douglas High School: Portland's largest and fastest-growing. Source: <http://hs.ddouglas.k12.or.us/>

School District Enrollment Change, 2001-02 to 2006-07

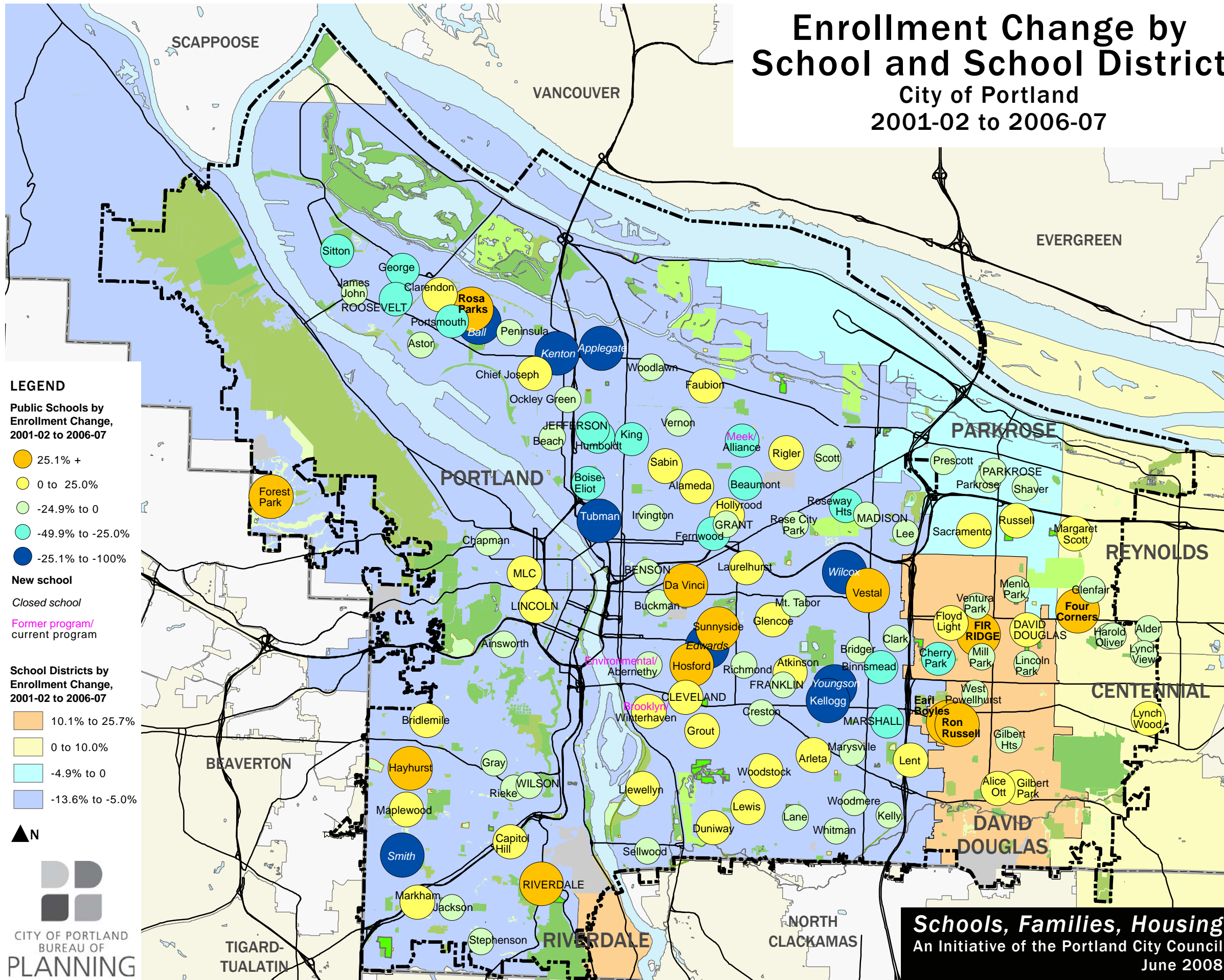
District	2006-07 Enrollment	% Change
Riverdale	533	25.7%
David Douglas	9,878	13.8%
Reynolds	10,321	9.9%
Centennial	6,346	5.4%
Parkrose	3,435	-4.7%
Portland	43,048	-13.6%

Greatest Enrollment Gain, in %, 2001-02 to 2006-07

School	2006-07 Enrollment	% Change
Ron Russell MS	786	1000.0%
Earl Boyles ES	450	1000.0%
Rosa Parks ES	435	1000.0%
Four Corners ES	37	1000.0%
Riverdale HS	216	120.4%
Forest Park ES	508	52.1%
Vestal K-8	343	51.1%
Sunnyside K-8	501	50.0%
Da Vinci MS	444	39.2%
Hayhurst ES	345	27.3%
Hosford MS	476	27.3%

Greatest Enrollment Loss, in %, 2001-02 to 2006-07

School	2006-07 Enrollment	% Change
Ball ES	0	-100.0%
Smith ES	0	-100.0%
Kenton ES	0	-100.0%
Applegate ES	0	-100.0%
Edwards ES	0	-100.0%
Wilcox ES	0	-100.0%
Youngson ES	0	-100.0%
Tubman MS	131	-74.7%
Kellogg MS	269	-59.7%
Fernwood MS	347	-42.9%
Gregory Heights MS	471	-42.6%
Portsmouth MS	286	-41.5%
Boise-Eliot K-8	415	-38.2%



LEGEND

- Public Schools by Enrollment Change, 2001-02 to 2006-07**
- 25.1% +
 - 0 to 25.0%
 - -24.9% to 0
 - -49.9% to -25.0%
 - -25.1% to -100%

- New school**
■ Closed school
■ Former program/
■ current program

- School Districts by Enrollment Change, 2001-02 to 2006-07**
- 10.1% to 25.7%
 - 0 to 10.0%
 - -4.9% to 0
 - -13.6% to -5.0%