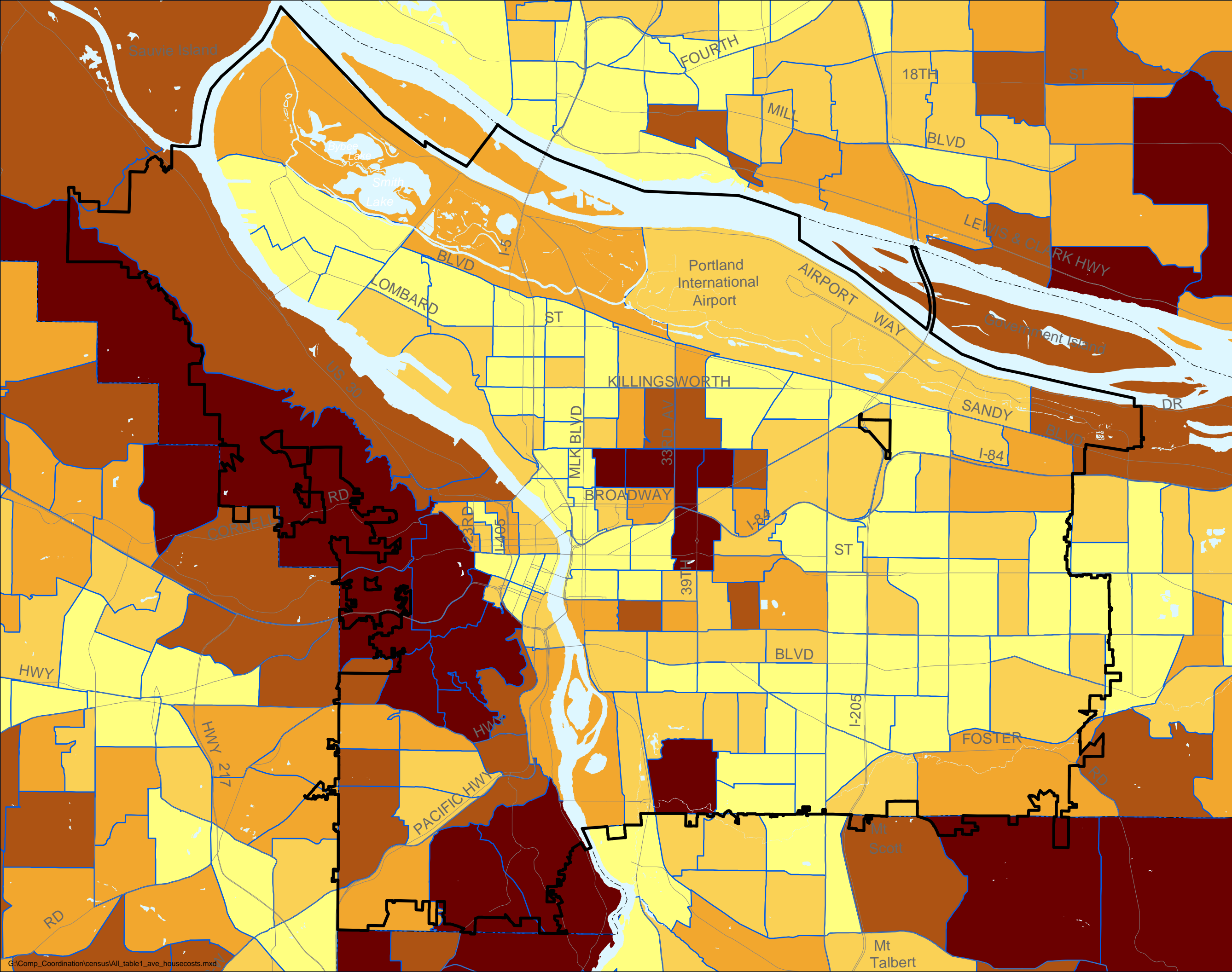

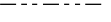








All Housing Types & Tenure

Estimated Average Yearly Housing Expenditure per Dwelling Unit, 2005



-  City Boundary
-  County Line
-  Major Arterials

yearly expenditure by census tract

-  up to \$13,000
-  \$13,000 to \$17,000
-  \$17,000 to \$21,000
-  \$21,000 to \$27,000
-  greater than \$27,000

Source: Metroscope Estimations, Metro

